



# Arrowhead Family Of Architectural Panel Systems

# Product Family



Vitrabond<sup>®</sup> is a **lightweight Metal Composite Material (MCM)** cladding Panel, manufactured in a continuous coil process by fusing metal skins to a composite core, and boasts the **widest variety of surfaces and finishes** in the industry.



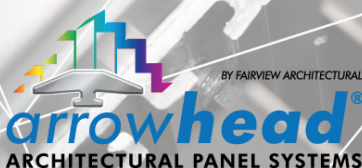
Vitraedge<sup>®</sup> is our **premium flashing material** that is available from 0.020" up to 0.063" thick, in a 3000 or 5000 Series Aluminum providing the best base metal for both continuous painted coil and anodizing solutions in the industry.



Vitrabond G2<sup>®</sup> is **the only truly Non-Combustible Metal Composite Material (MCM)** manufactured in a continuous coil process and is the lightest weight façade product in its class.



Vitraplate<sup>®</sup> is an **aluminum plate facade material** featuring our **industry leading coil coated process** up to 0.125" thick x 60" wide, reducing the logistics and risk involved with post-painting façade panels after fabrication.



The patented Arrowhead<sup>®</sup> suite of panel systems are **engineered to dramatically reduce labor costs**. Fully tested to all testing standards including **AAMA 508 and 509** rainscreen, **approval for Miami-Dade County**, and more.

## What Is The Arrowhead Panel System

**Arrowhead is Fairview's fully tested, AAMA 508 and 509 compliant, non-progressive rainscreen system that can be used with our Vitrabond, Vitrabond G2, and Vitraplate material.**

- ✓ **Non-progressive design** allows installers to start and stop as needed, use multiple crews on a single elevation, and work around other trades
- ✓ **Fully tested** to AAMA 508 and 509, Florida Product Approval, and ASTM Approval
- ✓ **Fast and easy installation** with revolutionary Arrowhead t-clip
- ✓ Fairview offers a comprehensive **training program** taught by our panel consultants for both fabrication and installation
- ✓ Arrowhead Panel Systems provide **design flexibility** by offering the ability to vary panel depth with the same simple installation process
- ✓ Arrowhead Lean offers a **faster and more efficient fabrication** process without the need for exposed fasteners





BY FAIRVIEW ARCHITECTURAL

**arrowhead® FLEX**

EFFICIENT CHOICES

# EFFICIENT CHOICES

**Arrowhead Flex is aesthetically similar to traditional rainscreen systems, but is designed to significantly reduce installation time and labor costs.**

- ✓ **Non-progressive design** allows installers to start and stop as needed, use multiple crews on a single elevation, and work around other trades.
- ✓ **Fully tested** to AAMA 508 and 509, Florida Product Approval, and multiple ASTM Approvals.
- ✓ **Fast and easy installation** with revolutionary Arrowhead t-clip
- ✓ Fairview offers a comprehensive **training program** taught by our panel consultants for both fabrication and installation
- ✓ Arrowhead Flex provide **design flexibility** by offering the ability to vary panel depth with the same simple installation process

# MAXIMUM PERFORMANCE

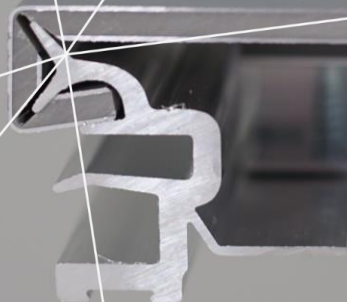


**arrowhead®/LEAN**  
MAXIMUM PERFORMANCE

BY FAIRVIEW ARCHITECTURAL

**Arrowhead Lean takes all the benefits of our more traditional Arrowhead Flex system and adds an extremely simplified fabrication process**

- ✓ Arrowhead lean offers a **faster and more efficient fabrication** process without the need for exposed fasteners
- ✓ **Non-progressive installation** method, like Flex and Flush allows contractors to work around trades.
- ✓ Panel assembly and fabrication is made **significantly faster** by eliminating need to fasten the material to the extrusion.
- ✓ **No exposed fasteners** provide a clean and simple aesthetic.



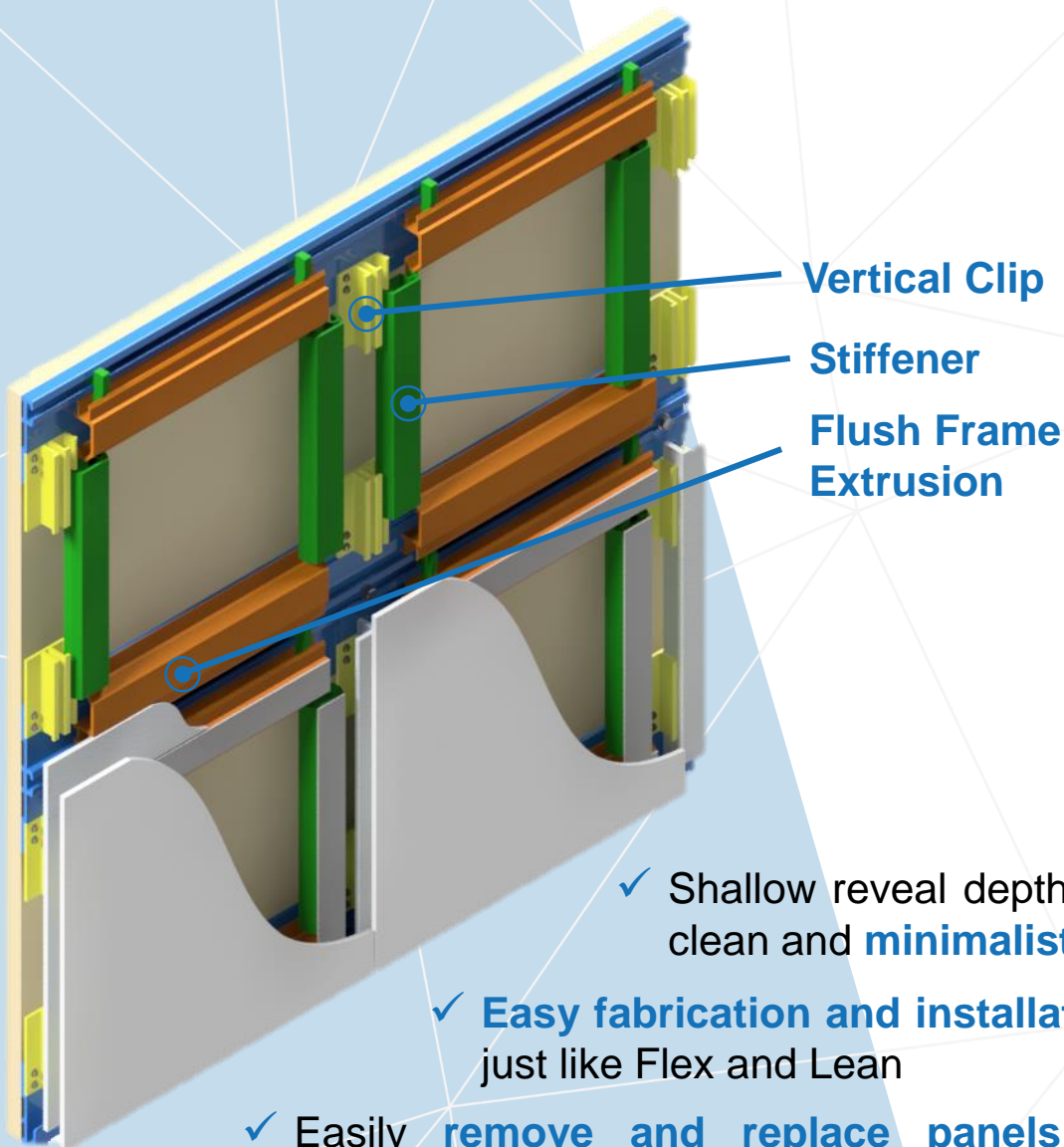


BY FAIRVIEW ARCHITECTURAL

# arrowhead® | FLUSH

CLEAN ESTHETICS

Arrowhead Flush, like Lean and Flex is also a non-progressive system but features a unique aesthetic. This system provides a minimalistic look with shallow reveals and easy fabrication.



- ✓ Shallow reveal depth provides clean and **minimalistic look**
- ✓ **Easy fabrication and installation** just like Flex and Lean
- ✓ Easily **remove and replace panels** without affecting panels around it

**This flexibility between panel system and cladding material enables Fairview to offer tailored solutions for a wide range of project designs.**

**Vitrabond**

**Arrowhead Flex**







# FAIRVIEW.

ARCHITECTURAL



860-242-2711  
Fairview-na.com  
helpdesk@Fairview-na

Multiple patents pending and approved for each Arrowhead Metal Panel Systems. Visit <https://www.fairview-na.com/products/arrowhead-panel-systems/>